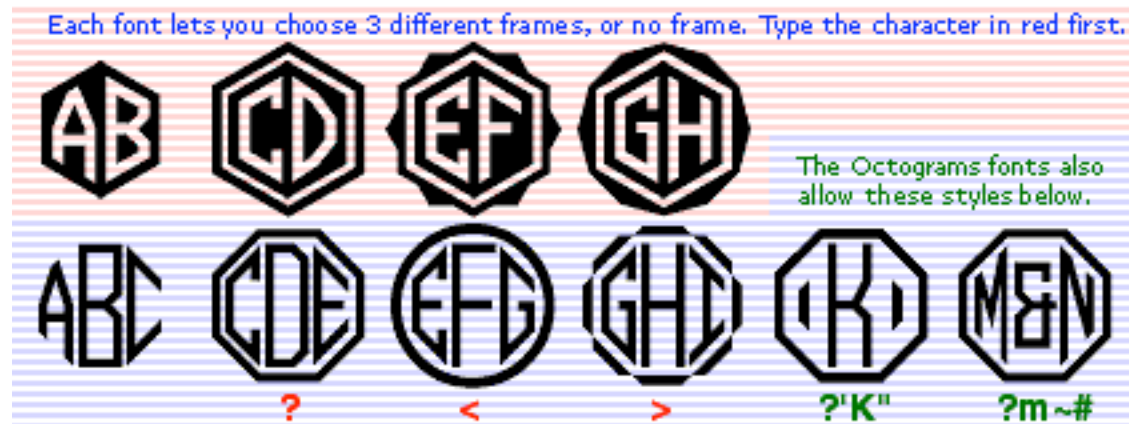


Hexagrams/Octograms computer fonts v1.0  
 © 2003 Harold Lohner  
 HLohner@aol.com  
<http://www.haroldsfonts.com>

Set of 4 fonts to make 2-letter hexagonal and 3-letter octagonal monograms, with a choice of frames



#### For 3-letter monograms:

1. Install the Octograms fonts and re-launch the program.
  2. Type ? [question mark] to get the ring (optional). There are alternate frames in the < [less than] and > [greater than] positions.
  3. The left-hand letters are located at the lowercase positions (a-z). Type the left initial.
  4. The large center letters are located at the uppercase positions (A-Z). Type the center initial.
  5. The right-hand letters are somewhat trickier to locate. Use this chart:
- |              |              |              |              |            |              |         |         |         |         |
|--------------|--------------|--------------|--------------|------------|--------------|---------|---------|---------|---------|
| A ... 1      | B ... 2      | C ... 3      | D ... 4      | E ... 5    | F ... 6      | G ... 7 | H ... 8 | I ... 9 | J ... 0 |
| K ... !      | L ... @      | M ... #      | N ... \$     | O ... %    | P ... ^      | Q ... & | R ... * | S ... ( | T ... ) |
| U ... - or _ | V ... = or + | W ... [ or { | X ... ] or } | Y ... \ or | Z ... ; or : |         |         |         |         |

After the right-hand initial is typed, the monogram is complete and the cursor will move to the right.

For a one-letter monogram, type ? [question mark] for the ring; ' [apostrophe] for the blank in the left position; [CAPITAL INITIAL]; " [quotation mark] for the blank in the right position.

For an A&B style insignia, type ` [grave accent] or ~ [ASCII tilde] to produce the ampersand in the center position.

#### For 2-letter monograms:

1. Install the Hexagrams fonts and re-launch the program.
2. Type ? [question mark] to get the ring (optional). There are alternate frames in the < [less than] and > [greater than] positions.
3. The left-hand letters are located at the lowercase positions (a-z). Type the left initial.
4. The right-hand letters are located at the uppercase positions (A-Z). Type the right initial. The monogram is then complete and the cursor will move to the right.